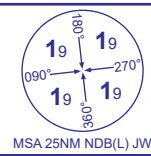


INSTRUMENT APPROACH - ICAO

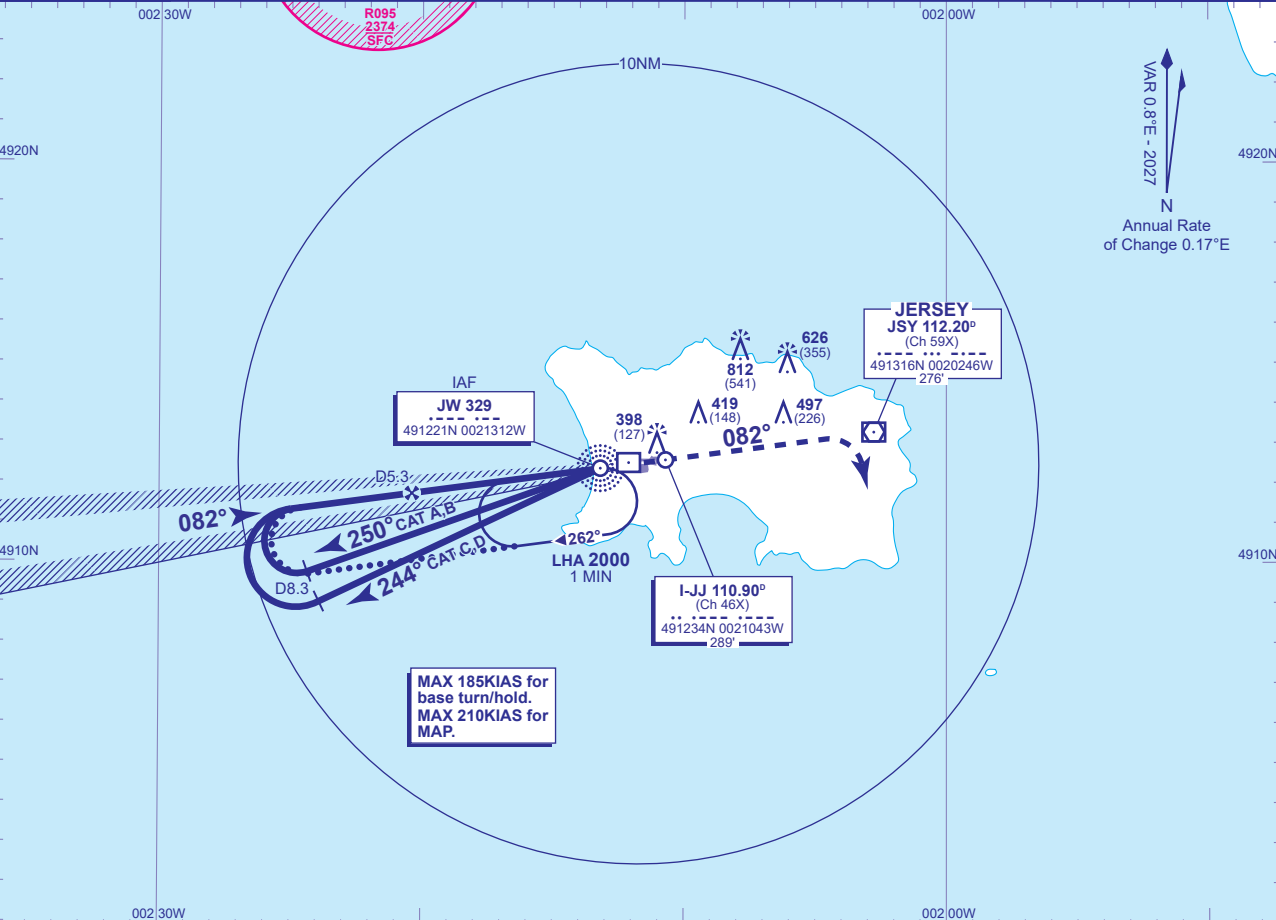
JERSEY  
ILS/DME/NDB(L)  
RWY 08  
(ACFT CAT A,B,C,D)



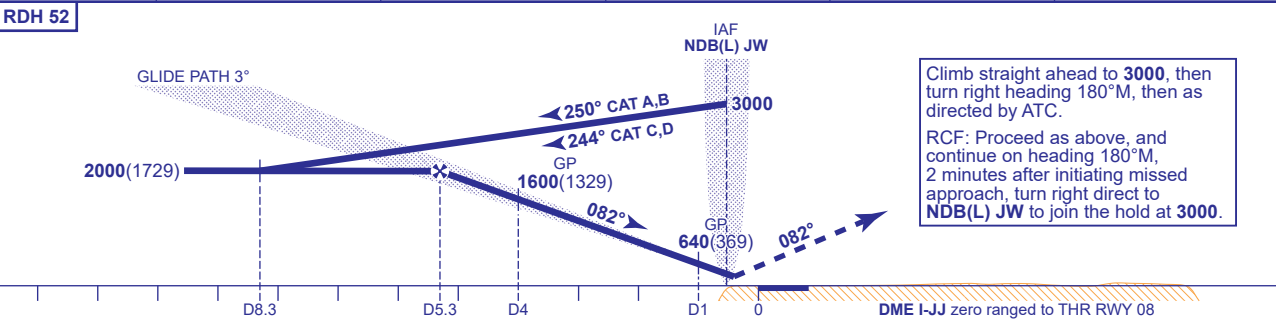
ATC	125.205, 120.455	JERSEY CONTROL
APP	120.305, 118.555	JERSEY APPROACH
TWR	119.455	JERSEY TOWER
	121.905	JERSEY GROUND
ATIS	134.680	JERSEY INFORMATION

AD ELEVATION	277
THR ELEVATION	271
OBSTACLE ELEVATION	812 AMSL (541) (ABOVE THR)
BEARINGS ARE MAGNETIC	

TRANSITION ALTITUDE	5000
---------------------	------



RECOMMENDED PROFILE GLIDE PATH 3°, 320FT/NM					
DME I-JJ	5	4	3	2	1
ALT(HGT)	1920(1649)	1600(1329)	1280(1009)	960(689)	640(369)



Aircraft Category		A	B	C	D	Rate of descent	G/S KT	160	140	120	100	80
OCA (OCH)	CAT I	420(149)	430(159)	437(166)	450(179)		FT/MIN	850	750	640	530	430
VM(C)OCA (OCH AAL)	Total Area	770(493)	770(493)	1210(933)	1210(933)							
	South of RWY 08/26	770(493)	770(493)	1030(753)	1030(753)							

**ALTERNATIVE PROCEDURE EXTENDED HOLDING PATTERN (MAX 185KIAS)**  
Arrive at IAF NDB(L) JW at 3000. Extend the outbound leg of the NDB(L) JW holding pattern to I-JJ D8.3 descending to 2000(1729). Turn right onto the LOC, when established, continue as for main procedure.

**AIRCRAFT UNABLE TO RECEIVE DME I-JJ**  
Advise ATC. Radar ranges will be passed equivalent to D8.3 outbound and D4 inbound.

CHANGE (2/26): JERSEY CONTROL (SECONDARY) FREQUENCY.